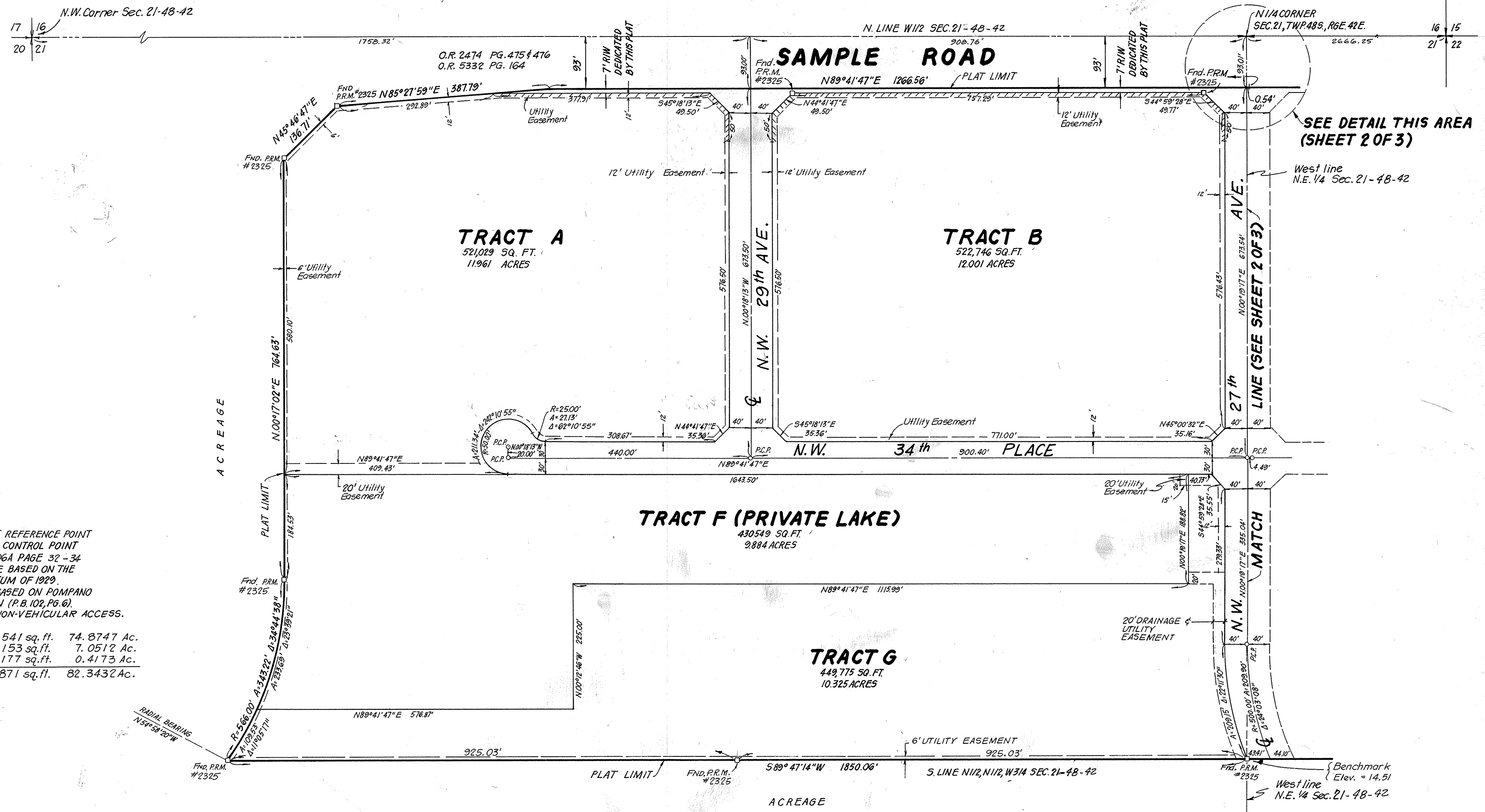
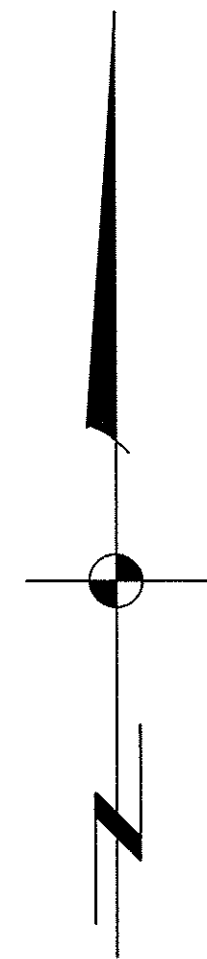
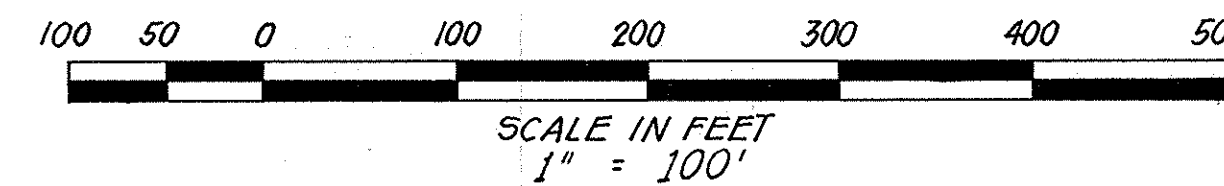


POMPANO INDUSTRIAL PARK THIRD ADDITION

**A PARCEL OF LAND IN SECTION 21, TOWNSHIP 48 SOUTH, RANGE 42 EAST
BROWARD COUNTY, FLORIDA**

PREPARED BY:
KEITH AND SCHNARS, P.A.
ENGINEERS · PLANNERS · SURVEYORS
1115 N.E. 4TH AVENUE
FORT LAUDERDALE, FLORIDA



SURVEY NOTES:

1. ☐ PRM INDICATES PERMANENT REFERENCE POINT
2. ☐ PCR INDICATES PERMANENT CONTROL POINT
3. SURVEY DATA IN FIELD BOOK 206A PAGE 32-34
4. ELEVATIONS SHOWN HEREON ARE BASED ON THE NATIONAL GEODETIC VERTICAL DATUM OF 1929.
5. BEARINGS SHOWN HEREON ARE BASED ON POMPOANO INDUSTRIAL PARK FIRST ADDITION (P.B. 102, P.G. 6).
6. ~~~~~ INDICATES LINE OF NON-VEHICULAR ACCESS.
7. AREA TABULATION:

Tracts A thru G	3,261,541 sq.ft.	74.8747 Ac.
Internal R/W	307,153 sq.ft.	7.0512 Ac.
T/R/W Sample Rd.	18,177 sq.ft.	0.4173 Ac.
TOTAL	3,586,871 sq.ft.	82.3432 Ac.